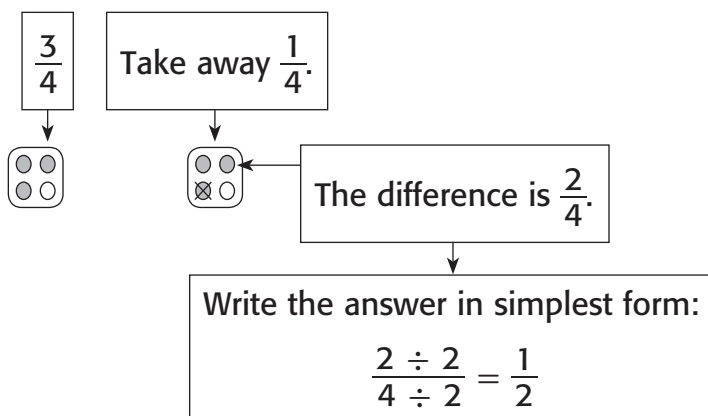


Lesson 4 Reteach

Subtract Like Fractions

To subtract like fractions, find the difference between the numerators, but keep the denominator the same.

Find $\frac{3}{4} - \frac{1}{4}$.



So, $\frac{3}{4} - \frac{1}{4} = \frac{1}{2}$.

Find each difference. Write in simplest form.

1. $\frac{5}{6} - \frac{1}{6} =$ _____

Simplify: $\frac{4 \div 2}{6 \div 2} =$ _____

2. $\frac{6}{8} - \frac{2}{8} =$ _____

Simplify: $\frac{\square \div 4}{\square \div 4} =$ _____

3. $\frac{9}{10} - \frac{3}{10} =$ _____

Simplify: $\frac{\square \div 2}{\square \div 2} =$ _____

4. $\frac{8}{9} - \frac{5}{9} =$ _____

Simplify: $\frac{\square \div 3}{\square \div 3} =$ _____

5. $\frac{5}{8} - \frac{3}{8} =$ _____

Simplify: $\frac{\square \div 2}{\square \div 2} =$ _____