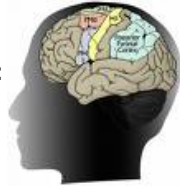


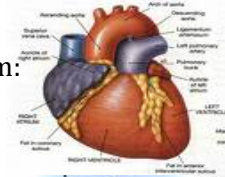
## HOW Tobacco AFFECTS the BODY

Criteria for assignment- Pick 4 out of these 5 body systems:

- Nervous system:



- Circulatory System:



- Respiratory System:



- Digestive System:



- Personal Appearance : A picture of a body.

-research the effects of tobacco/smoking on the four systems that you've chosen.

-Find at least 5 effects for each system that you pick.

-Make clear, organized notes of the information you find.

-Next, draw a diagram- a picture of the body system (you may use the pictures above as a reference) labeling, and describing how, the areas are affected.

-You will do this for each system. (4 diagrams)

-Fold paper in half. Two diagrams on each side.

-Diagrams must be NEAT and CLEARLY labeled.

Good Websites to use:

<http://smokefree.gov/health-effects>

[http://www.betterhealth.vic.gov.au/bhcv2/bhcarticles.nsf/pages/Smoking\\_effects\\_on\\_your\\_body](http://www.betterhealth.vic.gov.au/bhcv2/bhcarticles.nsf/pages/Smoking_effects_on_your_body)