

Name

My Homework

Lesson 8

Time to the Half Hour: Digital

Homework Helper



Need help? connectED.mcgraw-hill.com

A digital clock can also show time to the half hour.

analog clock

digital clock



hour minutes



hour minutes

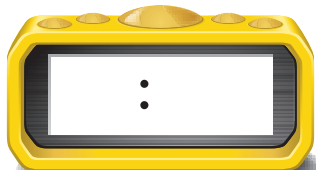
These clocks show half past 7 or 7:30.

Practice

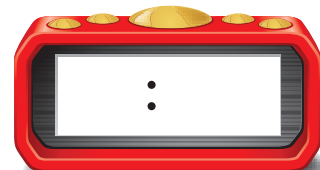
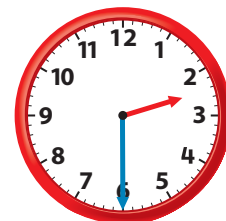
Tell what time is shown.

Write the time on the digital clock.

1.

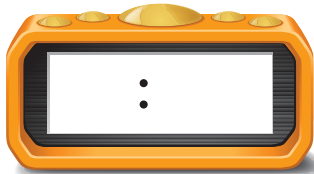


2.

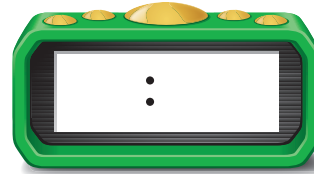
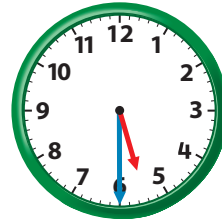


Tell what time is shown. Write the time on the digital clock.

3.

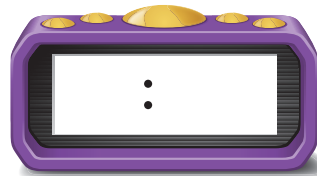


4.



Solve. Write the time on the digital clock.

5. Will begins his homework at 6 o'clock. He finishes it in a half hour. Write that time on the clock.



Test Practice

6. Which clock shows half past 12?



Math at Home Show your child an analog clock that shows 7:30. Ask him or her to draw a picture of a digital clock that shows the same time.