

Name .....

# My Homework

## Lesson 9

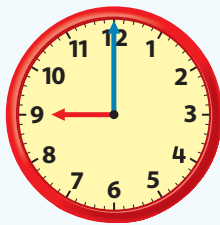
### Time to the Hour and Half Hour

#### Homework Helper



Need help? [connectED.mcgraw-hill.com](http://connectED.mcgraw-hill.com)

You can tell time to the hour and the half hour.



It is nine o'clock or 9:00.



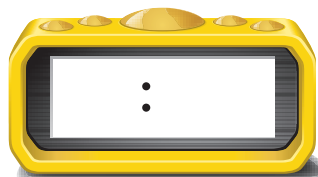
It is six-thirty or 6:30.

## Practice

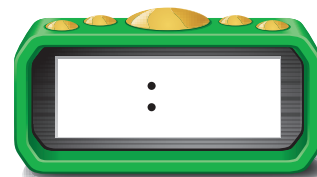
Draw the minute hand to show the time.

Write the time on the digital clock.

1. 2:30



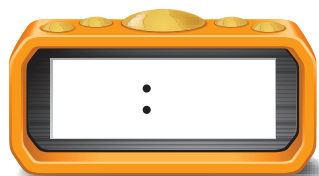
2. half past five



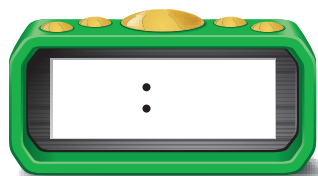
Draw the minute hand to show the time.

Write the time on the digital clock.

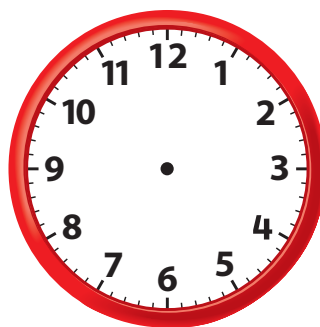
3. half past 12



4. 4 o'clock



5. It is half past the hour. My hour hand is between 5 and 6. What time is it? Draw the hands on the clock.



## Test Practice

6. What clock shows 8 o'clock?



**Math at Home** Practice telling time to the hour and half hour with your child by writing the time of familiar events such as mealtime, school time, and bedtime.