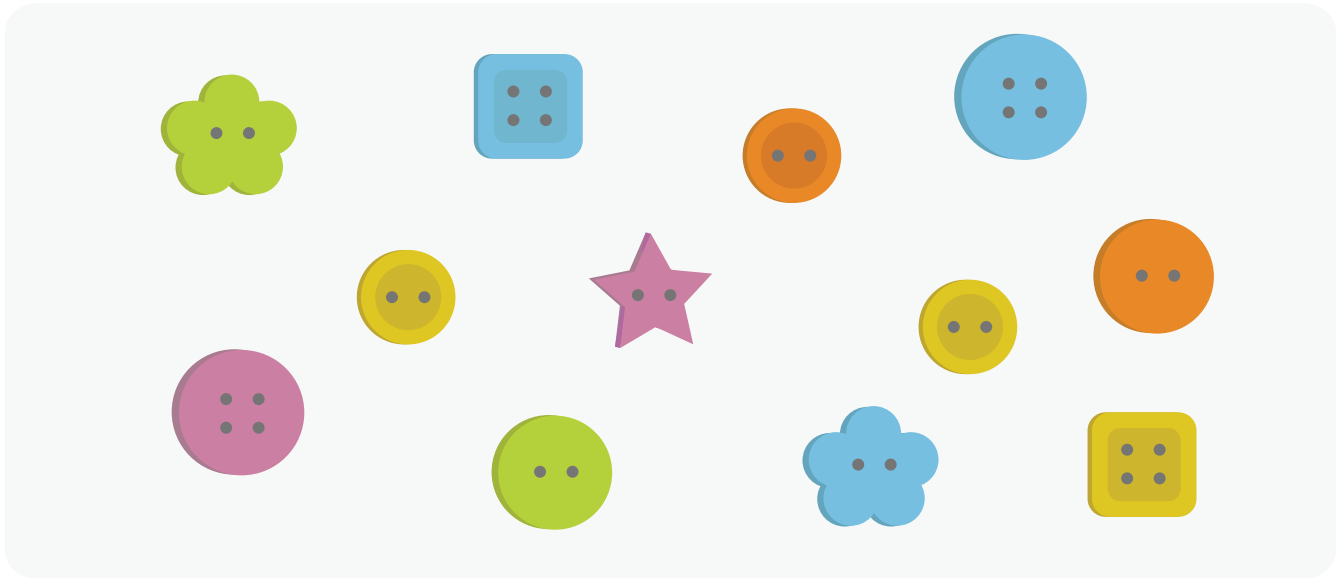


Buttons, Buttons

Use the picture to answer the questions.



What fraction of the buttons are blue? $\frac{\square}{\square}$

What fraction of the buttons are green? $\frac{\square}{\square}$

What fraction of the buttons are stars? $\frac{\square}{\square}$

What fraction of the buttons have 2 holes? $\frac{\square}{\square}$

What fraction of the buttons are circles? $\frac{\square}{\square}$

What fraction of the buttons have 4 holes? $\frac{\square}{\square}$

