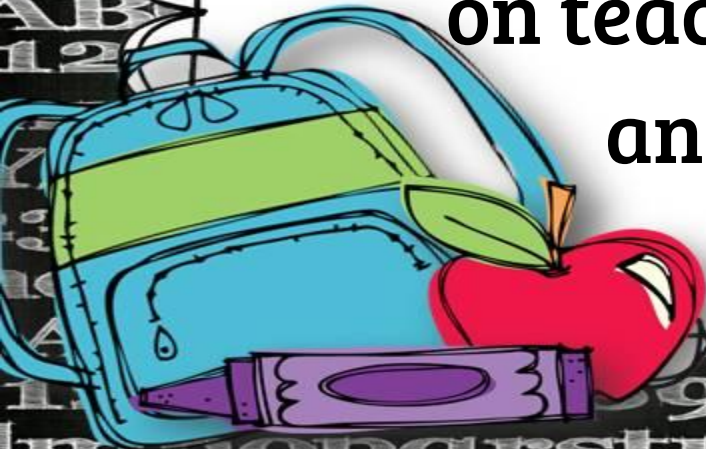


# Welcome to 1<sup>st</sup> Grade!



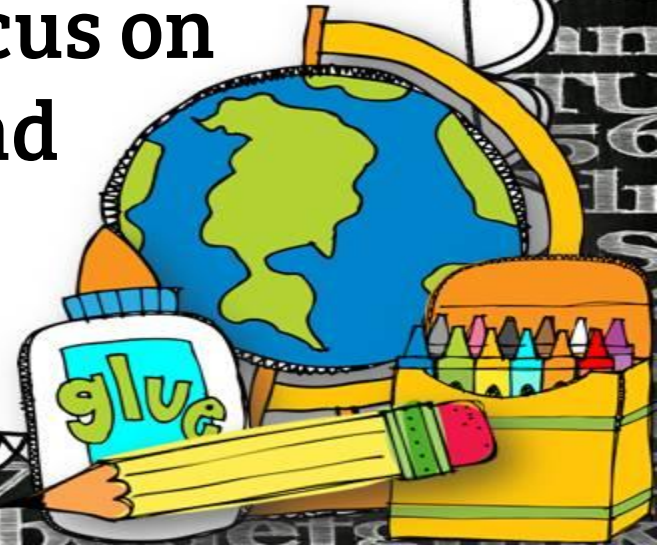
# **Mrs. Hills**

**Mrs. Hills is in the classroom from 8:00-12 noon and will primarily focus on teaching Language Arts and Social Studies.**



**Mrs. Teichert**

**Mrs. Teichert teaches from 12noon-3pm  
and will primarily focus on  
teaching math and  
science.**



# Ms. Carrie

**Ms. Carrie is our full-time aide.  
We are thrilled to have her additional  
support in our classroom!**



# Class Blog

The class blog is our primary form of communication. Please check it frequently. We recommend that you bookmark it and strongly encourage you to **SUBSCRIBE** to it.

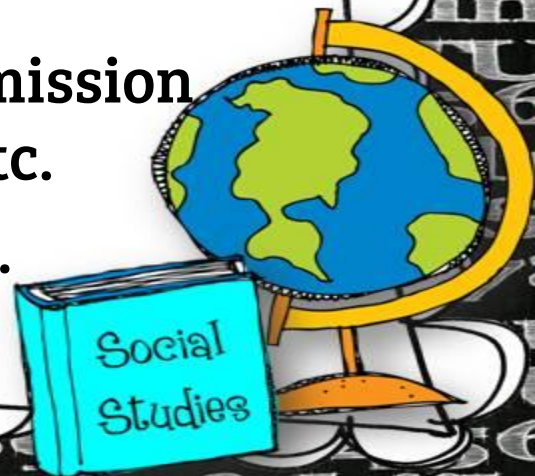
[Mrs. Hills and Mrs. Teichert's Class Blog](#)

# Take Home Communication Folder (Blue Folder)

**Stay at home pocket:** completed assignments, letters to parents, flyers, etc.

**Return to school pocket:** homework, permission slips, incomplete work, questionnaires, etc.

**Please check this folder DAILY.**



# Homework

Homework will consist of:

- ◆ Math review
- ◆ Math fluency
- ◆ Reading (20 minutes per day)
- ◆ Reading Fluency
- ◆ Spelling (Phonics and Sight Words)



# Grading

**Students will receive grades for the mastery of standards in all subject areas.**

**Assessing for mastery will help us know:**

**if students need additional help,**

**if students are proficient,**

**or if students need further enrichment.**





# Grading Scale

- |   |          |   |
|---|----------|---|
| 4 | 100%-90% | The student demonstrates mastery of the standard (can apply and teach). |
| 3 | 89%-80%  | The student demonstrates proficiency of the standard.                   |
| 2 | 79%-60%  | The student is approaching proficiency.                                 |
| 1 | 59%-0%   | The student is well below proficiency.                                  |



# Birthdays

We will send a small birthday bag with celebration instructions prior to your child's birthday.

We generally celebrate summer birthdays on their ½ birthday.



# Field Trips and Class Parties

## Field Trips

- Hogle Zoo (September)
- Ogden Nature Center- in class (Fall and Spring)
- Hill Aerospace Museum (May)

## Parties

- Halloween (October)
- Christmas (December)
- Valentines (February)



# Parent Volunteers

We love our parent volunteers!

You can help with:

STEM projects

STEM lab

Reading

Field Trips

Work at home

Class Parties

Math Fluency

**WATCH for sign-ups on our blog!**



# Drop Off

Students may enter the building after 8:00am. They are then expected to go to the playground area.

We will bring the students in at 8:25am.

Late bell rings at 8:30am.

(On the first day of school, you are welcome to bring your child into the classroom.)





# Pick Up

**Our class is assigned to exit the EAST doors.  
For the first few days we will take the class to  
the tree outside our classroom window.  
Exception: Carpool students will go to the back.  
Please talk with your child about where their  
ride or other students will be meeting them.**



# Lunch

Practice lunch **independent skills**:

- **How to open containers and packages**
- **How to properly and safely use a microwave**
- **How to prepare microwaveable meals**
- **What to keep and what to throw away**

What's for school lunch?

- Fresh salad bar daily
- 2 Hot and 2 Cold Entrees
- [Quest Academy Lunch](#)

**Friday Pizza count will be submitted on Wednesday.**



# The First Few Weeks

**First Grade= BIG CHANGE for your child**

Due to:

- Longer school schedule
- Increased expectations & independence
- Unfamiliar surroundings, people, rules, etc.



# The First Few Weeks

How to help with the transition:

**\*Monitor Sleep (Early, consistent bedtimes)**

**\*Be Encouraging**

**\*Healthy Meals (Breakfast!)**

**\*Consistent Attendance**



# Contact Information

Please feel free to contact us in the future  
with any questions.

Mrs. Teichert: [lteichert@questac.org](mailto:lteichert@questac.org)

Mrs. Hills: [rhills@questac.org](mailto:rhills@questac.org)

(801) 731-9859





# Parking Lot Procedures

